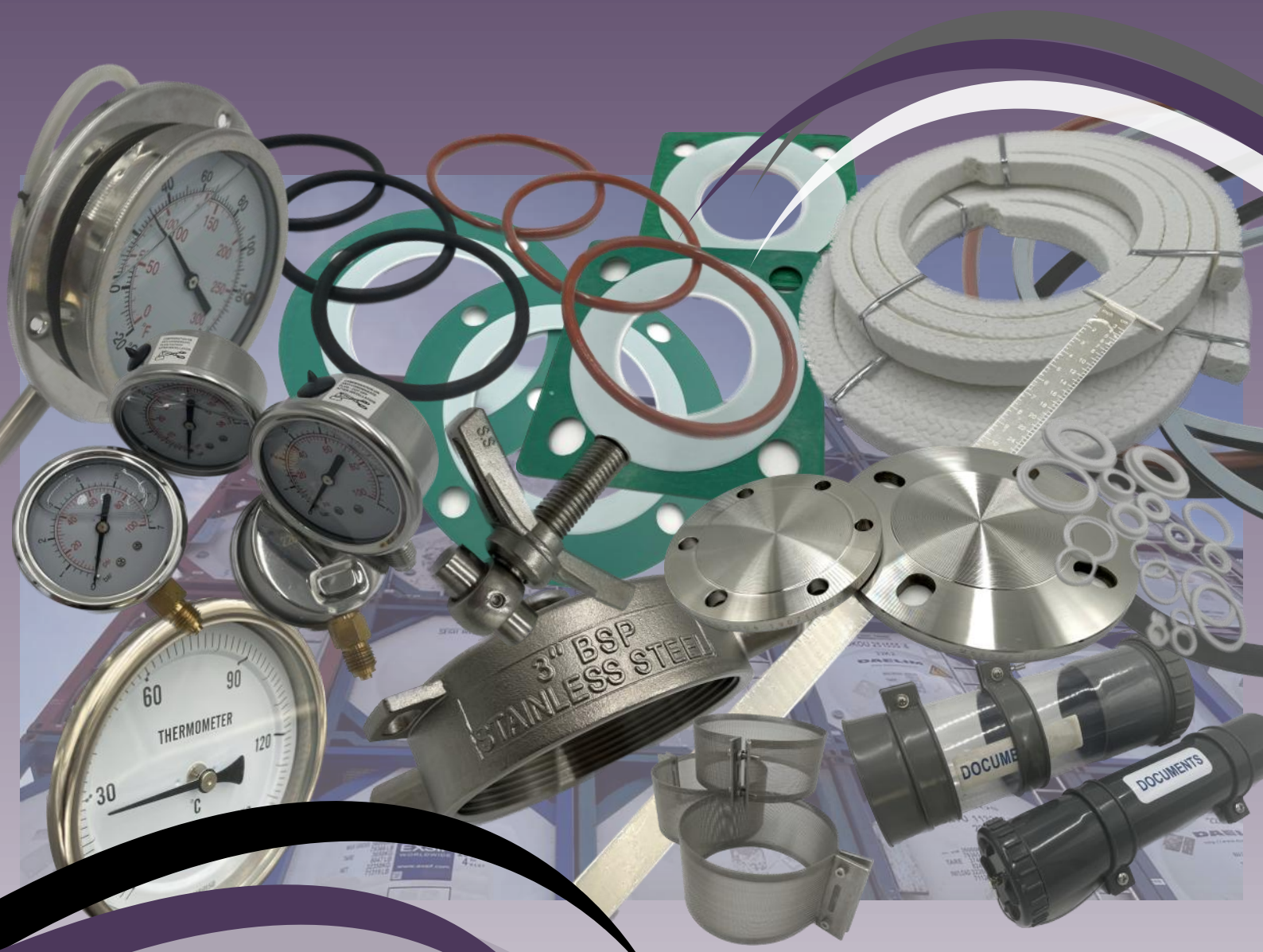


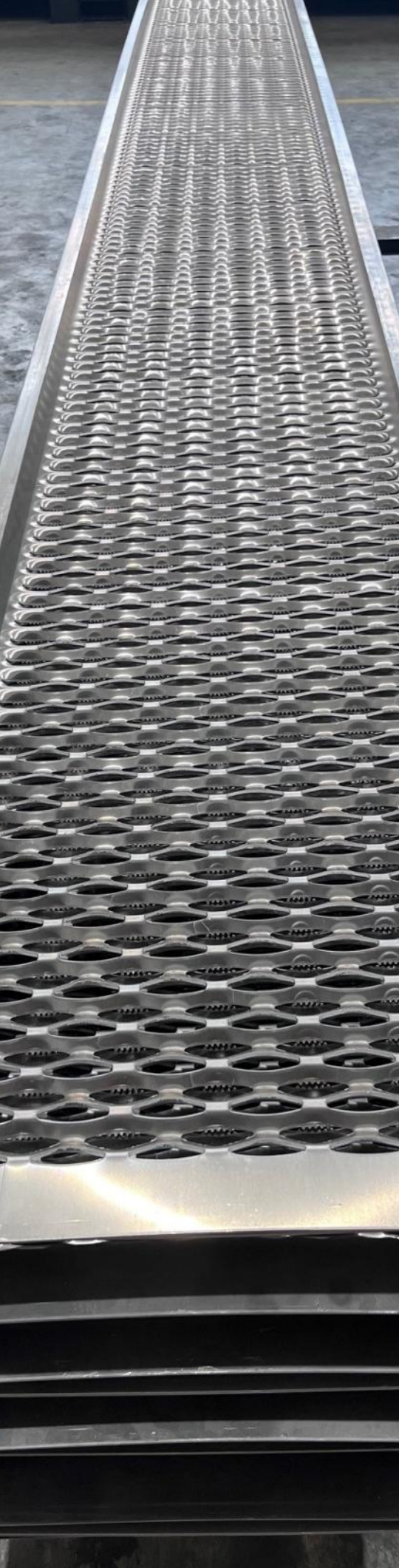
TANK CONTAINER

SPARE PARTS CATALOGUE



NCI GLOBAL PTE. LTD.

CHANGING THE WORLD WITH TECHNOLOGY



About NCI Global: *New Century Integration*

NCI Global Pte. Ltd. is founded in Year 2020, by a group of tank container and depot management strategists.

The founder and team have established since 1987 with decades of experiences in depot repair and maintenance, tank and parts trading, and many tank related activities.

With our advice and assistance, any depot can improve its operating standards, and meet the criteria and requirements of local authorities. We can provide you with more customised solutions to solve and upgrade your current existing or new depot's operational efficiency and safety measures.

MISSION

To provide safe, reliable, and cost-effective ISO tank solutions to our customers, while maintaining the highest standards of quality, compliance, and sustainability.

We are committed to being a trusted partner for our clients and delivering exceptional customer service through our experienced team of professionals. We strive to continuously improve our operations, innovate new technologies, and optimize our supply chain to minimize our environmental impact and create value for our stakeholders.

VISION

To become the global leading provider of sustainable and innovative solutions that transform people's lives and contribute to a better world.

We will achieve this by leveraging cutting-edge technology, fostering a culture of creativity and collaboration, and nurturing a passionate team that is committed to excellence in everything we do. Our ultimate goal is to create lasting value for our stakeholders and make a positive impact on society.

**CHANGING THE WORLD
WITH TECHNOLOGY**





CONTENT PAGE

FAST MOVING ITEMS

- 1** Manlid Seals
- 3** Valve Seals
- 4** O Rings
- 5** Valve Gaskets
- 7** Flanges & Connections
- 9** Dust Caps
- 10** Document Holders
Flame Traps
Dip Sticks
- 11** Thermometers
- 12** Pressure Gauges

METAL PARTS PRODUCTS (VALVE REPLACEMENT PARTS)

- 13** 2.5" Relief Valves
- 14** 1.5" Airline Ball Valve / 2" Airline Butterfly Valves
- 16** 3" 30° / 45° Footvalves
- 18** 3" Clamped Butterfly Valves
- 19** Manlid Components
Swingbolt Assembly & Components





CONTENT PAGE

METAL REPLACEMENT PARTS (ACCESSORIES)

- 20** Rivets
 - Walkways
 - Remote Controls
- 21** TIR Security Seals
 - Data Plates & Calibration Charts
- 22** Bursting / Rupture Discs
 - Bolts, Nuts & Washers

OTHER PRODUCTS

- 23** Claddings
 - Insulations
- 24** IMDG Labels
- 25** Tank Decals
- 33** PV Valve Test Kits / Periodical Test Rigs





Manlid Seals

PTFE Braided Manlid Seals

Specification

Material	Pure Poly Acrylic Nitrile (P.A.N.) fiber, thoroughly impregnated with heavy PTFE dispersions
Compatibility	General chemicals, Solvents, Oils, Water & Steam.
Temperature Range	-30°C (-22°F) to 120°C (248°F)

Note: This seal is non-gas-tight, it does not withhold air pressure.

Part No.	Dimension	Weight
MS10101700B	10mm x 10mm x 1700mm	200g
MS10141630B	10mm x 14mm x 1630mm	264g
MS10201630B	10mm x 20mm x 1630mm	357g
MS14141630B	14mm x 14mm x 1630mm	380g

Sweet White Rubber (SWR) Manlid Seals

Specification

Material	Sweet White Rubber (SWR) / Natural White Rubber
Compatibility	Food products
Temperature Range	-50°C (-58°F) to 80°C (176°F)

Part No.	Dimension / Size	Weight
MS08101625SWR	08mm x 10mm x 1625mm	194g
MS10101625SWR	10mm x 10mm x 1625mm	238g
MS10161625SWR	10mm x 16mm x 1625mm	362g
MS10141630SWR	10mm x 14mm x 1630mm	326g
MS14141630SWR	14mm x 14mm x 1630mm	447g
MS500S	500mm (Ring Type)	249g

PTFE Encapsulated EPDM Manlid Seals

Specification

Material	Braiding PTFE over a solid EPDM
Compatibility	Corrosive cargoes up to 140°C
Temperature Range	Maximum 170°C peak working temperature

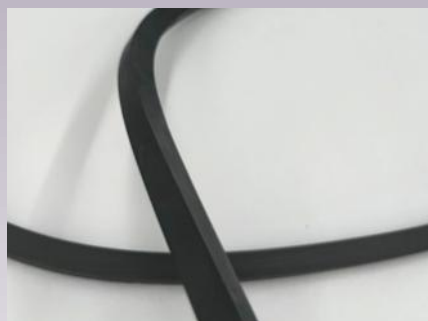
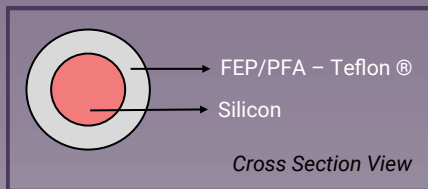
Part No.	Size	Weight
MS300ST	300mm (Ring Type)	200g
MS500ST	500mm (Ring Type)	400g

FAST MOVING PRODUCTS





FAST MOVING PRODUCTS



Manlid Seals

Viton Manlid Seals

Specification

Material	Viton
Compatibility	Corrosive cargo
Temperature Range	-25°C (-13°F) to 200°C (392°F)

Part No.	Size	Weight
MS500V	500mm (Ring Type)	370g

PTFE Encapsulated Silicon Manlid O Ring

Specification

Material	Combine of elastomer core of Silicon with a relatively thin, molded encapsulation of Teflon®
Compatibility	Resistant to practically all chemicals. Gas permeation is at a substantially lower rate than most other plastics. Immune & absorb near zero acid or alkaline
Temperature Range	Up to 300°C

Part No.	Size	Weight
MS300I	300mm (Ring Type)	200g
MS500I	500mm (Ring Type)	400g

*Core of Viton Encapsulated with Teflon is available upon request.

EPDM (Black Color) Manlid Seals

Specification

Material	EPDM
Compatibility	Some corrosive cargo. Not suitable for petroleum based liquids
Temperature Range	-50°C (-58°F) to 150°C (302°F)

Part No.	Size	Weight
MS500E	500mm (Ring Type)	237g





Valve Seals



**FAST MOVING
PRODUCTS**

Part No.	Description	Dimension		Weight
		ID	OD	
S5006	1½" Airline Ball Valve PTFE Front Seal	29mm	54mm	27g
S5006P	1½" Airline Ball Valve PTFE Front Seal (Old Version)	33mm	53mm	23g
S5007	1½" Airline Ball Valve PTFE Rear Seal	30mm	61mm	26g
S5007P	1½" Airline Ball Valve PTFE Rear Seal (Old Version)	36mm	66mm	47g
S0202	2" Airline Butterfly Valve PTFE Main Seal	47mm	66mm	10g
S0002	3" Butterfly Valve PTFE Main Seal	76mm	105mm	42g
S9855794	3" Butterfly Valve Teflon Seal	76mm	105mm	50g
S0399	3" Flanged Ball Valve PTFE Front Seal (Old Version)	79mm	143mm	274g
S1470	3" Flanged Ball Valve PTFE Rear Seal (Old Version)	76mm	102mm	47g
S3405	3" Flanged Ball Valve PTFE Front Seal (New Version)	76.7mm	127mm	131g
S3402	3" Flanged Ball Valve PTFE Back Seal (New Version)	93.3mm	76.8mm	30g
S9140193/10	1½" Airline Ball Valve Front Seal (New Version)	32.2mm	44mm	8g
S9140193/12	1½" Airline Ball Valve Rear Seal (New Version)	36mm	65.7mm	34g



**CHANGING THE WORLD
WITH TECHNOLOGY**





O Rings



**FAST MOVING
PRODUCTS**

Part No.	Description	Dimension		Weight
		ID	OD	
OR5104	3" Footvalve Encapsulated O Ring	78mm	88mm	9g
OR5101	2½" PV Pressure Encapsulated O Ring	67mm	77mm	9g
OR5108	2½" PV Vacuum Encapsulated O Ring	31mm	38mm	2g
OR5105	3" Footvalve Viton O Ring	78mm	88mm	11g
OR5102	2½" PV Pressure Viton O Ring	67mm	77mm	9g
OR5107	2½" PV Vacuum Viton O Ring	28mm	35mm	2g
OR5342	3" Butterfly Valve Clamping Plate Nitrile O Ring	95mm	98mm	4g
OR5664	2" Butterfly Valve Clamping Plate EPDM O Ring	80mm	82mm	1g



**CHANGING THE WORLD
WITH TECHNOLOGY**



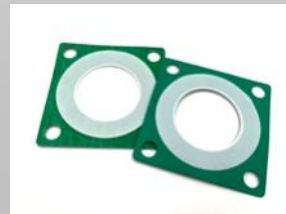


Valve Gaskets



**FAST MOVING
PRODUCTS**

Part No.	Description	Material	No. of Holes	A	B	C	D
				Hole Ø	PCD	Internal Ø	External Ø
GK5015	Footvalve to Tank Envelope Gasket	CNAF/ PTFE	8	14mm	178mm	115mm	203mm
GK5015T	Footvalve to Tank PTFE gasket - 8 Holes	Solid PTFE	8	14.5mm	178mm	115mm	203mm
GK5015/1	Footvalve to Tank Envelope Gasket (Interchangeable for 4 holes and 8 holes inlet flange footvalve)	CNAF/ PTFE	4	18mm	178mm	115mm	208mm
			4	14mm			
GK5015/1T	Footvalve to Tank PTFE Gasket (Interchangeable for 4 Hole and 8 Hole Inlet Flange Footvalve)	Solid PTFE	4	18mm	178mm	115mm	203mm
			4	14mm			
GK5032	Footvalve to Tank Envelope Gasket	CNAF/ PTFE	4	18mm	178mm	115mm	203mm
GK5046	PV Valve Envelope Gasket w/o Hole	CNAF/ PTFE	-	-	-	76mm	90mm
GK5046T	PV Valve PTFE Gasket Without Hole	Solid PTFE	-	-	-	76mm	90mm
GK5046-4H	PV Valve Blank Flange Envelope Gasket	CNAF/ PTFE	4	19mm	140mm	66mm	178mm
GK5049	Bottom Outlet Envelope Gasket	CNAF/ PTFE	4	18mm	160mm	78mm	203mm
GK5049S	3" Butterfly Valve to Footvalve Outlet Envelope Gasket (Square)	CNAF/ PTFE	4	18mm	160mm	78mm	145mm SQUARE
GK5169	Syphon Tube to 3" Flanged Butterfly Valve/ Ball Valve to Outlet Envelope Gasket	CNAF/ PTFE	6	15mm	168mm	78mm	198mm
GK5193	1½" Airline Valve Top Blank Flange Envelope Gasket	CNAF/ PTFE	4	16mm	98mm	43mm	127mm
GK5193NH	Airline Valve Envelope Gasket without Hole	CNAF/ PTFE	-	-	-	50mm	80mm

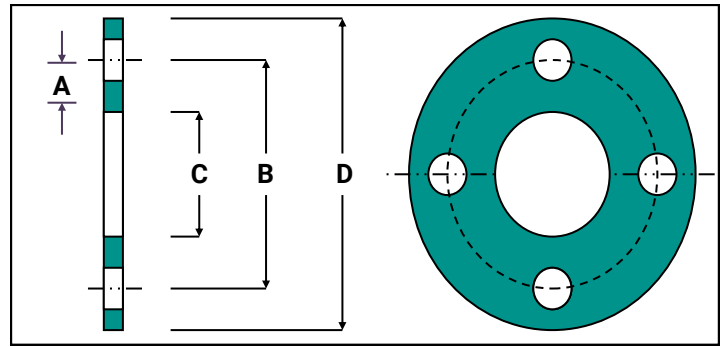


**CHANGING THE WORLD
WITH TECHNOLOGY**





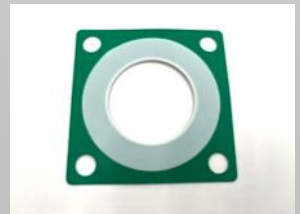
Valve Gaskets



**FAST MOVING
PRODUCTS**

Part No.	Description	Material	No. of Holes	A	B	C	D
				Hole Ø	PCD	Internal Ø	External Ø
GK5195	1½" BSP Airline Valve Inlet Envelop Gasket (Square)	PTFE/ CNAF	4	11mm	99mm	48mm	96mm SQUARE
GK5348	1½" Airline Ball Valve PTFE Gasket (Square)	Solid PTFE	4	10mm	102mm	32mm	95mm SQUARE
GK5500	2" Airline Butterfly Valve Inlet PTFE Envelope Gasket (Square)	Solid PTFE	4	10mm	102mm	50mm	95mm SQUARE
GK5500T	2" Airline Butterfly Valve Inlet PTFE Gasket (Square)	Solid PTFE	4	11mm	102mm	50mm	96mm SQUARE
GK5360	2" Flanged Airline Butterfly Valve Envelope Gasket	CNAF/ PTFE	4	18mm	125mm	50mm	160mm
GK5345	3" Composite Butterfly Valve Outlet Teflon Gasket	Solid PTFE	6	12mm	120mm	90mm	142mm
GK5490H	3" Butterfly Valve to 3" Outlet Connection Envelope Gasket (Square)	CNAF/ PTFE	4 (Slotted)	18mm	146mm-160mm	89mm	145mm SQUARE
GK5490HT	3" Butterfly Valve to 3" Outlet Connection PTFE Gasket (Square)	Solid PTFE	4 (Slotted)	18mm	160mm	89mm	145mm SQUARE
GK5222	Syphon Tube Envelope Gasket w/o Hole	CNAF/ PTFE	-	-	-	102mm	140mm
GK5222-H6	Dip Tube Envelope Gasket 6 Holes	CNAF/ PTFE	6	14mm	168mm	102mm	203mm
GK5398	PV Valve Adaptor Flange Envelope Gasket	CNAF/ PTFE	6	13mm	105mm	66mm	127mm
GK5490	Bottom Outlet Envelope Gasket w/o Hole	CNAF/ PTFE	-	-	-	90mm	130mm

*Others sizes are available upon request / custom made.



**CHANGING THE WORLD
WITH TECHNOLOGY**





Flanges & Connections

**FAST MOVING
PRODUCTS**



Adaptor Flanges

Part No.	Description	No. of Holes	Hole Ø (mm)	PCD (mm)	Drilling Spec.
FL0404	Top Discharge Butterfly Valve	8	18 & M16	160	DIN80
FL7001	2½" BSP Relief Valve	6	11	105	-
FL3091	2½" BSP Relief Valve	4	18	145	DIN65 PN10

Blind Flanges

Part No.	Description	No. of Holes	Hole Ø (mm)	PCD (mm)	Drilling Spec.
FL80206	3" Top Discharge Blind Flange	6	14	168	-
FL88066	3" Blind Flange with 4 Elongated Holes	4	18 (Slots)	146 to 160	DIN80 / 3" ASA
FL0007	2½" Pressure Relief Valve Blind Flange	6	11	105	-

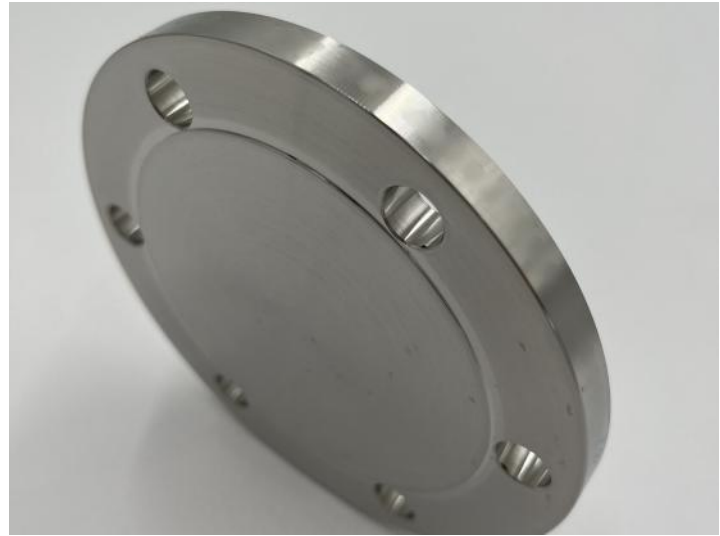


**CHANGING THE WORLD
WITH TECHNOLOGY**





Flanges & Connections



**FAST MOVING
PRODUCTS**

Outlet Flanges

Part No.	Description	No. of Holes	Hole Ø (mm)	PCD (mm)	Drilling Spec.
FL88047	3" BSP Outlet Square Type Connection	4	18	160	DIN 80

Weld-in Flanges

Part No.	Description	No. of Holes	Hole Ø (mm)	PCD (mm)	Drilling Spec.
FL0006	45° Footvalve Weld-In Flange	8	M12	178	3½" ASA 150
FL3150	2½" PV Valve Weld-In Flange	6	M10	105	-
FL0025	1½" Airline Weld-In Flange	4	M8	103.5	-



**CHANGING THE WORLD
WITH TECHNOLOGY**





Dust Caps

Dust Caps – Stainless Steel

Description	Part No.
¾" BSP Dust Cap SS c/w PTFE Seal & Chain	DC075SB
1" BSP Dust Cap SS c/w PTFE Seal & Chain	DC100SB
1½" BSP Dust Cap SS c/w PTFE Seal & Chain	DC150SB
2" BSP Dust Cap SS c/w PTFE Seal & Chain	DC200SB
3" BSP Dust Cap SS c/w PTFE Seal & Chain	DC300SB

Dust Caps – Aluminum

Description	Part No.
¾" BSP Aluminum Cap c/w PTFE Gasket & Chain	DC075AB
1" BSP Aluminum Cap c/w PTFE Gasket & Chain	DC100AB
1½" BSP Aluminum Cap c/w PTFE Gasket & Chain	DC150AB
2" BSP Aluminum Cap c/w PTFE Gasket & Chain	DC200AB
3" BSP Aluminum Cap c/w PTFE Gasket & Chain	DC300AB

Dust Caps Gaskets – PTFE

Description	Part No.
¾" PTFE Dust Cap Gasket 25 X 13.5 X 3mm	GK01
1" PTFE Dust Cap Gasket 31.3 x 21.8 x 3mm	GK02
1½" PTFE Dust Cap Gasket 46 x 32 x 3mm	GK03
2" PTFE Dust Cap Gasket 59 x 44 x 3mm	GK04
3" PTFE Dust Cap Gasket 87 x 70 x 3mm	GK05

FAST MOVING PRODUCTS



CHANGING THE WORLD
WITH TECHNOLOGY





Document Holders / Flame Traps / Dip Sticks

Document Holders

Description	Part No.
3" Plastic Document Holder with SS Retaining Cable	DH001
4" Clear Plastic Document Holder with SS Retaining Cable	DH002

Document Holders : A sealed tube for carrying documents, such as the transport action, cleaning certificate, etc.

Flame Traps

Description	Part No.
Flame Trap (Old Version)	FT9013091
Flame Trap (New Version)	FT9013091/1
Flame Trap	FT82900

Flame Gauze : A metal gauze, which is used when carrying flammable liquids. It permits pressure to be expelled, but prevents flashback.

Dip Sticks

Description	Part No.	Weight
Straight Type SS Dip Stick	DS001	0.8Kg
Angle Type SS Dip Stick	DS002	0.4Kg

Dip Stick : A calibrated bar situated in the manhole that is used to measure the amount of liquid in the tank. A measurement is taken off the bar and then cross referenced with the calibration chart.

FAST MOVING PRODUCTS





Thermometers

Capillary Oil Filled Thermometers

Specification

Dial	100mm
Range	-20 ^o C to 150 ^o C
Accuracy	Full scale of ± 2%
Capillary	4"
Stem	100mm length x 10mm diameter
Connection	Back mounted ½" BSP Thread
Material	Stainless Steel

Description	Part No.
Capillary Thermometer 4"/1M (-20 - 150 ^o C) c/w Silicon Oil Filled, Stainless Steel	TC-20150

- Strong, stainless steel fully sealed cage
- Tough acrylic glass front face, distinctive and attractive appearance
- Constructed to stringent quality control standard with each unit thoroughly tested
- Easy installation - drilled for pop rivet/screw fixing
- Suitable for new/old tanks

Bi-Metal Thermometers

Specification

Dial	100mm
Range	0 ^o C to 150 ^o C
Accuracy	Full scale of ± 1%
Cable Specification	1.5M silicon table
Connection	½" NPT standard for 4" (100mm) dial
Material	Stainless Steel

Description	Part No.
Bi-Metal Thermometer 4" (0 - 150 ^o C) Stainless Steel	TB0150

- It has two thin strips of metal with different degrees of heat co-efficient
- The two metal strips are bonded together and form a helix or coil, which is attached to a pointer on a dial
- It easy to read, hermetically sealed (waterproof) and the case & stem are made of 304 Stainless steel
- It provides fast and accurate temperature readings for most industrial applications

FAST MOVING PRODUCTS





Thermometers

Digital Thermometers

Specification

Dial	100mm
Range	-50°C to 200°C
Accuracy	Full scale of ± 1%
Capillary	1M PVC
Material	Stainless Steel

Description	Part No.
Solar Digital Thermometer, Battery-Operated	TDG-50200

- Easy to read, large size digital display continuously showing temperature in degree Celsius (also available in degree Fahrenheit)
- Strong, non-metallic fully sealed case
- Tough polycarbonate front face, distinctive & attractive appearance. Optional operator logo & colour
- Constructed to stringent quality control standards with each unit thoroughly tested
- It has an ability to eliminates surface electrochemical corrosion problems

Pressure Gauges

Description	Part No.
2½" SS Pressure Gauge 0-7 Bar c/w ¼" BSP Bottom Connection Glycerine Filled, Full Stainless Steel	G2507SS
2½" SS Pressure Gauge 0-1 Bar c/w ¼" BSP Bottom Brass Connection Glycerine Filled	G2501SSBC
2½" SS Pressure Gauge 0-4 Bar c/w ¼" BSP Bottom Brass Connection Glycerine Filled	G2504SSBC
2½" SS Pressure Gauge 0-7 Bar c/w ¼" BSP Bottom Brass Connection Glycerine Filled	G2507SSBC

Pressure Gauge - A Pressure Gauge is fitted to the airline connection, and can be fitted during filling, discharging or testing. The Pressure Gauge is for mounting in flange gauge connection for pressure readings in tank or above bursting disc when fitted.

FAST MOVING PRODUCTS





Valve Replacement Parts



METAL REPLACEMENT PARTS

2.5" Relief Valves

S/N	Relief Valve	2.5" Pressure/Vacuum Products	2.5" Pressure Only Products
	Parts		
1	Stainless Steel Plug	VPLUGSS0004	VPLUGSS0004
2	Cap	-	-
3	Setting Locking Grubscrew	FV81001	FV81001
4	M8 Nut (2)	FV82004	-
5	Vacuum Spring Pad	FV80005	-
6	6" Hg Vacuum Spring	FV84012	-
7	Pressure Plate	FV80056	FV80058
8	Vacuum Poppet	FV80983/3	-





Valve Replacement Parts



METAL REPLACEMENT PARTS

1.5" Airline Ball Valve / 2" Airline Butterfly Valves

S/N	Relief Valve	1.5" Airline Ball Valve Product Part No.	2" Airline Butterfly Valve Product Part No.
	Parts		
1	Ø8 Washer	FV83005	-
2	Handle	FV80025	FV80050/2
3	Snap Ring	FV80017	FV80005
4	Spacer	-	-
5	Gauze Filter	FV80010/1	FV80010/2
6	Gauze Guard	FV80040	-
7	Sintered Filter (2)	-	-
8	Valve Body	-	-
9	PTFE Bearing	-	FV80009
10	Stuffing Bush	-	S0307
11	Stuffing Clamp	-	FV80204
12	Location Pin	-	FV80010
13	Location Pin Spring	-	FV80012/1
14	¼" BSP Plug	FV88005/1	FV88005/2
15	Ball	-	-
16	Spindle	FV80001	FV80203





Valve Replacement Parts



METAL REPLACEMENT PARTS

1.5" Airline Ball Valve / 2" Airline Butterfly Valves

S/N	Airline Valve	1.5" Airline Ball Valve Product Part No.	2" Airline Butterfly Valve Product Part No.
	Parts		
17	PTFE Washer	S3002	-
18	Stuffing Boss (2)	-	-
19	Disc Spring	-	-
20	Operating Lever	-	FV89838
21	Split Ring	-	FV80011
22	Retaining Washer	-	FV80370
23	Spring Washer	-	FV83008/1
24	Seal Plate	-	-
25	Closure Plate	-	-





Valve Replacement Parts

METAL REPLACEMENT PARTS



3" 30° / 45° Footvalves

S/N	Footvalve	3" 30° / 45° New Footvalve (Faster Flow Speed) Product Part No.	3" 30° / 45° Standard Footvalve (Standard Flow Speed) Product Part No.
	Parts		
1	Body	-	-
2	Spring Boss Gasket	FV85845	-
3	Spring Assembly	-	-
4	Spring Washer	FV83008	-
5	Bush Seal	S0064	-
6	Seal Energizer	S0063	-
7	Poppet	FV80040	FV82020
8	Bayonet Cap	-	FV80334A
9	PTFE Crankshaft End Bush	-	-
10	Crank Block Assembly	-	FV80300
11	Cleanflow Footvalve Spring Retaining Pin	FV80015	-
12	Spindle Bearing	S0062	-
13	Spindle	FV80200/2	FV80010/4
14	Stuffing Clamp	FV80016	FV81001/C
15	Spring Washer	FV83008/2	-
16	Stuffing Seal	S0061	-





Valve Replacement Parts

METAL REPLACEMENT PARTS



3" 30° / 45° Footvalves

S/N	Footvalve	3" 30° / 45° New Footvalve (Faster Flow Speed) Product Part No.	3" 30° / 45° Standard Footvalve (Standard Flow Speed) Product Part No.
	Parts		
17	Handle Linkage Assembly	-	-
18	Handle Retaining Washer	-	FV80370
19	Handle	-	FV85010
20	Standard Cleanflow Handle	-	-
21	Standard Highlift Handle	FV85010	-





Valve Replacement Parts



METAL REPLACEMENT PARTS

3" Clamped Butterfly Valves

S/N	Butterfly Valve	3" Clamped Butterfly Product Part No.
	Parts	
1	Washer	FV80370/3
2	Split Ring	FV80011
3	Operating Lever	FV89837
4	Handle	FV80050/3
5	Handle Location Spring	FV80012/2
6	Handle Location Pin	FV80010
7	Plain Washer	FV83005
8	Stuffing Clamp	FV80040/2
9	PTFE Stuffing Clamp Bush	S0301
10	Spindle	FV80200/3
11	PTFE Spindle Seat	-
12	Spring Washer	FV83003
13	Body	-
14	Bottom Spindle	FV80036
15	PTFE Bottom Bush	-
16	Closure Plate	FV80400
17	Seal Clamp Plate	FV80045
18	Nylon Spacer	S1500





Valve Replacement Parts

METAL REPLACEMENT PARTS



Manlid Components

Description	Part No.
Manlid Cover SS Lug Bracket	FV81534SST
Manlid Cover SS Locking Bracket	FV107
Manlid Cover SS TIR 'U' Bracket	FV111
TIR Pin Straight Model SS Manlid Cover Locking Pin	FV81106
Manlid Neckring SS Swingbolt Bracket (For 16mm Swingbolt Hinge)	FV81548
Manlid Cover SS Hinge Kit	FV8135B
Manlid Cover SS Hinge Bracket (Thickness: 6mm)	FV81555
Manlid Neck Ring SS Hinge Bracket, (Thickness: 6mm)	FV81556/1
Manlid Cover SS Hinge Pin	FV81060/3

Swingbolt Assembly & Components

Swingbolt Assembly

Description	Part No.
3/4" BSW Swingbolt, 66mm Long, 16mm Eyebolt	SB81260
3/4" BSW Swingbolt, 66mm Long, 19mm Eyebolt	SB81081
3/4" BSW Swingbolt, 89mm Long, 16mm Eyebolt	SB81342
3/4" BSW Swingbolt, 89mm Long, 19mm Eyebolt	SB81060

Eyebolt - Eyebolt size is 3/4" BSW comes with bolt length 66mm or 89mm and bolt eye 16mm and 19mm. Manufactured in stainless steel.

Handnut

Description	Part No.
3/4" BSW Handnut - Stainless Steel	SB80310

Hinge Pin

Description	Part No.
Swingbolt Hinge Pin, 16mm x 45mm	SB80913
Swingbolt Hinge Pin, 19mm x 45mm	SB80911

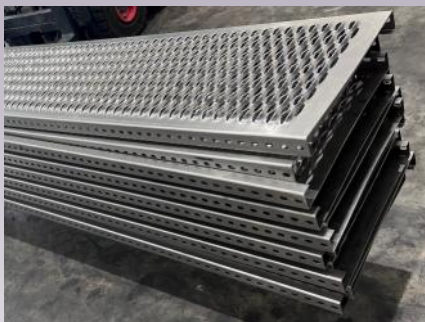




Rivets

Description	Part No.
3/16" x 1/4" TIR Alum/Steel Open End Large Flange Rivet	RIVET001
3/16" x 3/4" TIR Alum/Steel Open End Large Flange Rivet	RIVET002
3/16" x 1/4" Dome Rivet, Alum/Steel Open End	RIVET003
3/16" x 1/4" Dome Rivet, Alum/Steel Open End	RIVET004

METAL REPLACEMENT PARTS



Walkways

Part No.	Dimension	Material	Weight
WW40040A	400mm x 40mm x 5.79m	Aluminum	23Kg
WW400A	400mm x 50mm x 5.79m	Aluminum	24Kg
WW475A	475mm x 50mm x 5.79m	Aluminum	25Kg
WW47540A	475mm x 40mm x 5.79m	Aluminum	24Kg

* Walkway bracket is available upon request.

** Walkway length can be sewed to customers' requested length at a service charge upon request.

Walkways - All walkways are manufactured from 3mm high-grade aluminum. Our walkways are Lloyds tested and approved for deflection characteristics.

A ladder and anti-slip walkway are provided for easy and safe access to top fittings and top corner castings. To reduce the overall weight of the tank, walkways do not run the whole length of the tank, as it is only necessary to reach the components.

Care should be taken not to walk directly on the tank, as this could be very dangerous, plus it avoids damage to the cladding and insulation.

Remote Controls

Description	Part No.
Remote Control Bracket SS - Washer (Thickness: 11mm)	BRACKET001
Remote Control SS Wire Rope (Thickness: 3mm)	WIREROPESS002
Remote Control Tension Spring Dia 20mm x 114mm x2mm (Hook Type)	SPRING001
Remote Control SS Wire Rope Clip	CLIP003

* Client's logo can be custom-made upon request.

Remote Control - Remote Control on the side of the tank, allows the drive to close off the discharge valve from this safe location.





TIR Security Seals

Description	Part No.
Bullet Seal	TSB10
Security Seal - PVC	TSP20
Security Seal - Cable	TSC40
Security Seal - Metal	TSM50

* Client's logo can be custom-made upon request.

TIR Security Seal - The use of TIR security seal comes with serial no. and are for locking or sealing of main valves on ISO Tank for prevention of opening the valve during transportation or shipment.

Permanent sealing consists of approved rivets, welded bars or bolts. Temporary seals at cargo access points are fitted by customs officers using the approved locking devices.

METAL REPLACEMENT PARTS



Data Plates & Calibration Charts

Description	Part No.
Consolidated Data Plate SS (Without Data)	DP001
CSC Data Plate SS	DP002
Approved for Transportation Data Plate SS	DP003
Hazchem Plate, 800mm x 600mm (For Hazchem sign)	DPA8
Service - Engraving on Data Plate	DPE2
Calibration Chart SS: 21000 LT	CC21000
Calibration Chart SS: 23000 LT	CC23000
Calibration Chart SS: 24000 LT	CC24000
Calibration Chart SS: 25000 LT	CC25000
Calibration Chart SS: 26000 LT	CC26000

Date Plates - The tanks' passport. A plate that identifies the owner/manager of the tank, the unique serial number, the data of manufacture, as well as indicating significant data and recording the test period validity.

Calibration Charts - The Calibration Chart (tank table) gives the needed information about the level (height) and the corresponding volume of the cargo product in the ISO tank container.

OWNER / OPERATOR
OWNER'S ADDRESS
OWNER'S SERIAL NUMBER

MANUFACTURER
COUNTRY OF MANUFACTURE
YEAR AND MONTH OF MANUFACTURE
MODEL NUMBER
MANUFACTURER'S SERIAL NUMBER

MAX. GROSS WEIGHT kg lb
TARE WEIGHT kg lb
MAX. PAYLOAD kg lb
TOTAL WATER CAPACITY AT 20°C m³ US gal

DESIGN CODE AND APPLICABLE REGULATIONS
TANK MATERIAL SPECIFICATION
INTERNAL LINING
REFERENCE TEMPERATURE ZONE
DESIGN TEMPERATURE
SHELL THICKNESS mm in
HEAD THICKNESS mm in
MIN. EQUIV. SHELL THICKNESS IN MILD STEEL mm in
CORROSION ALLOWANCE mm in
MAX. ALLOWABLE WORKING PRESSURE bar psi
TEST PRESSURE bar psi
RECY. CALCULATION PRESSURE bar psi
STEAM HEATING MEDIUM bar psi
STEAM HEATING TEST PRESSURE bar psi
STEAM CHIMNEY MATERIAL SPECIFICATION bar psi

ASME SECTION VIII DIVISION 1
°C °F
mm in
mm in
mm in
mm in
bar psi
bar psi
bar psi
bar psi

TC IMPACT APPROVED

DATE OF INITIAL HYDRAULIC TEST AND AUTHORITY

DATE OF 1.5 YEARS PERIODICAL INSPECTION AND AUTHORITY

DATE OF 3 YEARS PERIODICAL HYDRAULIC TEST AND AUTHORITY

CSC SAFETY APPROVAL

COUNTRY OF APPROVAL AND APPROVAL REFERENCE

DATE MANUFACTURED

IDENTIFICATION NUMBER

MAXIMUM GROSS WEIGHT kg lb
ALLOWABLE STACKING WEIGHT FOR 1.8G kg lb
RACKING TEST LOAD VALUE kg lb
DATES OF EXAMINATIONS

APPROVED FOR TRANSPORT UNDER CUSTOMS SEAL

MANUFACTURER'S NO. OF THE CONTAINER

TYPE

CHANGING THE WORLD
WITH TECHNOLOGY





Bursting / Rupture Discs

Specification

Sizes	65mm and 80mm
Operating Conditions	Pressure: Up to 80% of rated burst pressure; full vacuum
Standard Burst Pressure	3.67, 4.10 or 4.84 Bar at 20°C; other pressures available
Material	Nickel disc standard, with 316SS inlet/outlet rings; other materials available
Seat Type	Flat seat
Holders	Designed to mount directly to tank flanges

Description	Part No.
65mm Bursting Disc - 4.84 Bar @ 20°C	RD6548420
65mm Bursting Disc - 110 PSIG @ 72°F	RD2511072
80mm Bursting Disc - 4.84 Bar @ 20°C	RD8048420
80mm Bursting Disc - 110 PSIG @ 72°F	RD811072

Bursting Disc - A thin membrane made of a suitable material such as SS or Teflon (PTFE) which has a known tolerance to pressure. It has two functions one to protect the valve from corrosion & secondly a pressure relief device which breaks when the pressure exceeds the pressure set. The bursting disc is set between the MAWP and the test pressure.

It used for emergency relief or used as a hermetic seal for relief valves to prevent the release of toxic or especially hazardous vapors.

METAL REPLACEMENT PARTS



Bolts, Nuts & Washers

Bolts, Nuts & Washers - All sizes available for use on ISO tank containers.





OTHER PRODUCTS



Claddings

Description	Part No.
Aluminum White Coated Cladding 0.8mm x 4' - Roll	CDA408WR
Aluminum Cladding 0.8mm x 4' x 8'	CDA48
GRP Cladding 4' x 8' x 2mm	CDG127250
GRP Cladding 4' x 28' x 2mm	CDG127800
Cladding Band/Strap SS	CDB0061

Cladding - GRP (FRP) / Glass reinforced plastic (Fibre reinforced polyester) resin sheet with glass fibre used to encase insulation. The cladding jacket is to protect the insulation against rain / sea water.

Insulations

Description	Part No.
Polyurethane PU Foam Slab 4' x 2' x 2"	CDPU422
Glass Wool (All sizes and density available)	TBA

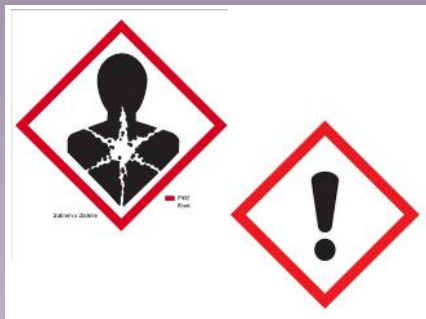
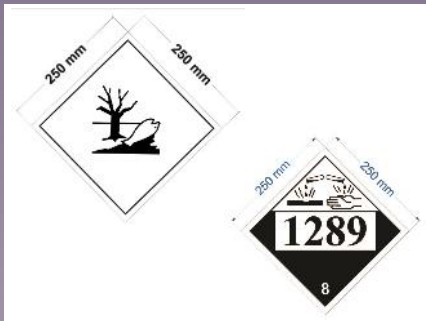
Insulation - Standard thickness is 50mm. Examples, polyurethane foam (greenish) or Rockwell, similar to loft insulation or Fiberglass. Rockwell is better for high temperature products. Foam crumbles away at about 110°C - 115°C. This insulation may degrade at excessive temperature.

Before loading check that the loading and operating temperature do not exceed the maximum permissible operating temperature marked on the data plate.





OTHER PRODUCTS



IMDG Labels

Description
IMDG Class 1 - Explosives
IMDG Class 2 - Flammable Gas
IMDG Class 3 - Flammable Liquid
IMDG Class 4 - Flammable Solids or Substances
IMDG Class 5.1 - Oxidizing Agent
IMDG Class 6 - Toxic
IMDG Class 7 - Radioactive Substances
IMDG Class 8 - Corrosive
IMDG Class 9 - Miscellaneous Dangerous Substances
IMDG - Marine Pollutant (Square)
Decal: GHS Carcinogen symbol - Pictogram
Decal: GHS Pictogram Label - Exclamation Point
Decal: IMDG: Class 3 Flammable, UN No. (Blank)
Decal: IMDG: Class X with UN No.
Decal: Calibration Chart Data

** Other classes of IMDG label are available upon request.*





Tank Decals

Single Alphabet / Numeric (Printed Black on White)

Description	Part No.
2" Single Alphabet "A"	TD0001
2" Single Alphabet "B"	TD0002
2" Single Alphabet "C"	TD0003
2" Single Alphabet "D"	TD0004
2" Single Alphabet "E"	TD0005
2" Single Alphabet "F"	TD0006
2" Single Alphabet "G"	TD0007
2" Single Alphabet "H"	TD0008
2" Single Alphabet "I"	TD0009
2" Single Alphabet "J"	TD0010
2" Single Alphabet "K"	TD0011
2" Single Alphabet "L"	TD0012
2" Single Alphabet "M"	TD0013
2" Single Alphabet "N"	TD0014
2" Single Alphabet "O"	TD0015
2" Single Alphabet "P"	TD0016
2" Single Alphabet "Q"	TD0017
2" Single Alphabet "R"	TD0018
2" Single Alphabet "S"	TD0019
2" Single Alphabet "T"	TD0020
2" Single Alphabet "U"	TD0021
2" Single Alphabet "V"	TD0022
2" Single Alphabet "W"	TD0023
2" Single Alphabet "X"	TD0024
2" Single Alphabet "Y"	TD0025
2" Single Alphabet "Z"	TD0026
2" Numeric "0"	TD0027
2" Numeric "1"	TD0028
2" Numeric "2"	TD0029
2" Numeric "3"	TD0030
2" Numeric "4"	TD0031
2" Numeric "5"	TD0032
2" Numeric "6" & "9"	TD0033
2" Numeric "7"	TD0034
2" Numeric "8"	TD0035

OTHER PRODUCTS





Tank Decals

Single Alphabet / Numeric (Printed Black on White)

Description	Part No.
4" Single Alphabet "A"	TD0036
4" Single Alphabet "B"	TD0037
4" Single Alphabet "C"	TD0038
4" Single Alphabet "D"	TD0039
4" Single Alphabet "E"	TD0040
4" Single Alphabet "F"	TD0041
4" Single Alphabet "G"	TD0042
4" Single Alphabet "H"	TD0043
4" Single Alphabet "I"	TD0044
4" Single Alphabet "J"	TD0045
4" Single Alphabet "K"	TD0046
4" Single Alphabet "L"	TD0047
4" Single Alphabet "M"	TD0048
4" Single Alphabet "N"	TD0049
4" Single Alphabet "O"	TD0050
4" Single Alphabet "P"	TD0051
4" Single Alphabet "Q"	TD0052
4" Single Alphabet "R"	TD0053
4" Single Alphabet "S"	TD0054
4" Single Alphabet "T"	TD0055
4" Single Alphabet "U"	TD0056
4" Single Alphabet "V"	TD0057
4" Single Alphabet "W"	TD0058
4" Single Alphabet "X"	TD0059
4" Single Alphabet "Y"	TD0060
4" Single Alphabet "Z"	TD0061
4" Numeric "0"	TD0062
4" Numeric "1"	TD0063
4" Numeric "2"	TD0064
4" Numeric "3"	TD0065
4" Numeric "4"	TD0066
4" Numeric "5"	TD0067
4" Numeric "6" & "9"	TD0068
4" Numeric "7"	TD0069
4" Numeric "8"	TD0070

OTHER PRODUCTS





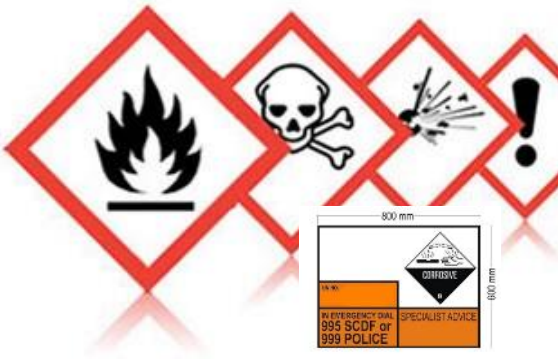
Tank Decals

Single Alphabet / Numeric (Black Kisscut)

Description	Part No.
2" Single Alphabet "A"	TD0071
2" Single Alphabet "B"	TD0072
2" Single Alphabet "C"	TD0073
2" Single Alphabet "D"	TD0074
2" Single Alphabet "E"	TD0075
2" Single Alphabet "F"	TD0076
2" Single Alphabet "G"	TD0077
2" Single Alphabet "H"	TD0078
2" Single Alphabet "I"	TD0079
2" Single Alphabet "J"	TD0080
2" Single Alphabet "K"	TD0081
2" Single Alphabet "L"	TD0082
2" Single Alphabet "M"	TD0083
2" Single Alphabet "N"	TD0084
2" Single Alphabet "O"	TD0085
2" Single Alphabet "P"	TD0086
2" Single Alphabet "Q"	TD0087
2" Single Alphabet "R"	TD0088
2" Single Alphabet "S"	TD0089
2" Single Alphabet "T"	TD0090
2" Single Alphabet "U"	TD0091
2" Single Alphabet "V"	TD0092
2" Single Alphabet "W"	TD0093
2" Single Alphabet "X"	TD0094
2" Single Alphabet "Y"	TD0095
2" Single Alphabet "Z"	TD0096
2" Numeric "0"	TD0097
2" Numeric "1"	TD0098
2" Numeric "2"	TD0099
2" Numeric "3"	TD0100
2" Numeric "4"	TD0101
2" Numeric "5"	TD0102
2" Numeric "6" & "9"	TD0103
2" Numeric "7"	TD0104
2" Numeric "8"	TD0105

OTHER PRODUCTS





Tank Decals

Single Alphabet / Numeric (Black Kisscut)

Description	Part No.
4" Single Alphabet "A"	TD0106
4" Single Alphabet "B"	TD0107
4" Single Alphabet "C"	TD0108
4" Single Alphabet "D"	TD0109
4" Single Alphabet "E"	TD0110
4" Single Alphabet "F"	TD0111
4" Single Alphabet "G"	TD0112
4" Single Alphabet "H"	TD0113
4" Single Alphabet "I"	TD0114
4" Single Alphabet "J"	TD0115
4" Single Alphabet "K"	TD0116
4" Single Alphabet "L"	TD0117
4" Single Alphabet "M"	TD0118
4" Single Alphabet "N"	TD0119
4" Single Alphabet "O"	TD0120
4" Single Alphabet "P"	TD0121
4" Single Alphabet "Q"	TD0122
4" Single Alphabet "R"	TD0123
4" Single Alphabet "S"	TD0124
4" Single Alphabet "T"	TD0125
4" Single Alphabet "U"	TD0126
4" Single Alphabet "V"	TD0127
4" Single Alphabet "W"	TD0128
4" Single Alphabet "X"	TD0129
4" Single Alphabet "Y"	TD0130
4" Single Alphabet "Z"	TD0131
4" Numeric "0"	TD0132
4" Numeric "1"	TD0133
4" Numeric "2"	TD0134
4" Numeric "3"	TD0135
4" Numeric "4"	TD0136
4" Numeric "5"	TD0137
4" Numeric "6" & "9"	TD0138
4" Numeric "7"	TD0139
4" Numeric "8"	TD0140

OTHER PRODUCTS





Tank Decals

Single Alphabet / Numeric
(Black Kisscut with Transparent Transfer Tape)

Description	Part No.
2" Single Alphabet "A"	TD0141
2" Single Alphabet "B"	TD0142
2" Single Alphabet "C"	TD0143
2" Single Alphabet "D"	TD0144
2" Single Alphabet "E"	TD0145
2" Single Alphabet "F"	TD0146
2" Single Alphabet "G"	TD0147
2" Single Alphabet "H"	TD0148
2" Single Alphabet "I"	TD0149
2" Single Alphabet "J"	TD0150
2" Single Alphabet "K"	TD0151
2" Single Alphabet "L"	TD0152
2" Single Alphabet "M"	TD0153
2" Single Alphabet "N"	TD0154
2" Single Alphabet "O"	TD0155
2" Single Alphabet "P"	TD0156
2" Single Alphabet "Q"	TD0157
2" Single Alphabet "R"	TD0158
2" Single Alphabet "S"	TD0159
2" Single Alphabet "T"	TD0160
2" Single Alphabet "U"	TD0161
2" Single Alphabet "V"	TD0162
2" Single Alphabet "W"	TD0163
2" Single Alphabet "X"	TD0164
2" Single Alphabet "Y"	TD0165
2" Single Alphabet "Z"	TD0166
2" Numeric "0"	TD0167
2" Numeric "1"	TD0168
2" Numeric "2"	TD0169
2" Numeric "3"	TD0170
2" Numeric "4"	TD0171
2" Numeric "5"	TD0172
2" Numeric "6" & "9"	TD0173
2" Numeric "7"	TD0174
2" Numeric "8"	TD0175

OTHER PRODUCTS



CHANGING THE WORLD
WITH TECHNOLOGY





Tank Decals

Single Alphabet / Numeric (Black Kisscut with Transparent Transfer Tape)

Description	Part No.
4" Single Alphabet "A"	TD0176
4" Single Alphabet "B"	TD0177
4" Single Alphabet "C"	TD0178
4" Single Alphabet "D"	TD0179
4" Single Alphabet "E"	TD0180
4" Single Alphabet "F"	TD0181
4" Single Alphabet "G"	TD0182
4" Single Alphabet "H"	TD0183
4" Single Alphabet "I"	TD0184
4" Single Alphabet "J"	TD0185
4" Single Alphabet "K"	TD0186
4" Single Alphabet "L"	TD0187
4" Single Alphabet "M"	TD0188
4" Single Alphabet "N"	TD0189
4" Single Alphabet "O"	TD0190
4" Single Alphabet "P"	TD0191
4" Single Alphabet "Q"	TD0192
4" Single Alphabet "R"	TD0193
4" Single Alphabet "S"	TD0194
4" Single Alphabet "T"	TD0195
4" Single Alphabet "U"	TD0196
4" Single Alphabet "V"	TD0197
4" Single Alphabet "W"	TD0198
4" Single Alphabet "X"	TD0199
4" Single Alphabet "Y"	TD0200
4" Single Alphabet "Z"	TD0201
4" Numeric "0"	TD0202
4" Numeric "1"	TD0203
4" Numeric "2"	TD0204
4" Numeric "3"	TD0205
4" Numeric "4"	TD0206
4" Numeric "5"	TD0207
4" Numeric "6" & "9"	TD0208
4" Numeric "7"	TD0209
4" Numeric "8"	TD0210

OTHER PRODUCTS





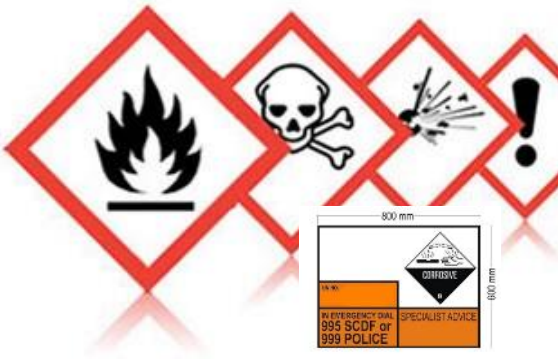
Tank Decals

Standard Tank Shipping Labels

Description	Part No.
Prefix (Blank) with check digit box, border: 10mm - size: 765 x 135mm	TD5001
"UIC (Blank)", Printed Black On White	TD5041
"UIC 60", Printed Black On White	TD5036
"UIC 70", Printed Black On White	TD5002
"UIC 87", Printed Black On White	TD5003
Earth Point Label (Triangle) - size: 83mm x 83mm x 83mm	TD5004
Height Decal 2.9 / 9.5	TD5039
Height Decal 2.6 / 8.5	TD5005
Height Decal 2.4 / 8	TD5031
"AAR 600" - 2", Printed Black on White	TD5006
"Rid / Adr" - 2", Printed Black on White	TD5007
Weight Decal - Empty (MGW, Tare & Payload), Printed Black On White	TD5008
Weight Decal - Empty (MGW & Tare only), Printed Black On White	TD5009
"T11" - Font size: 4", Printed Black on White	TD5014
"22T6" - Font size: 4", Printed Black On White	TD5015
"L4BN" - Font size: 4", Printed Black on White	TD5021
"UN PORTABLE TANK" - Font size: 2", Printed Black on White	TD5016
Steam Inlet (Black on White) 100pcs/pack	TD5017
Steam Outlet (Black on White) - 100pcs/pack	TD5018
"TANK UNDER PRESSURE" - Font size: 2", Printed Black On White	TD5019
"FOODSTUFFS ONLY" - Font size: 50mm, Printed Black on White	TD5022
"FOOD STUFF ONLY" - Font size: 100mm, Printed Red on White	TD5023
"25cbm 4 Bar M.W.A.P" - size:300mm x 235mm, Printed Blue on White,	TD5024
"STEAM M.A.W.P 4 BAR, TEST PRESSURE 6 BAR" - Printed on White, size: 5" x 3"	TD5025
"Overhead Downward Lightning Arrow" (Triangle), Printed Black on Yellow	TD5026
"Overhead Downward Lightning Arrow" (Rectangular), Printed Black on Yellow	TD5027
"TC IMPACT APPROVED" - Font size: 2", Printed Black on White	TD5028
"UNDER NITROGEN" - Font size: 2", Printed Red on White	TD5029
"MAWP 4 Bar" - size: 220 x 165mm, Printed Black on White	TD5030
"CAPACITY (XXXXX) L" - Font size :4", size:755mm x 125mm, Printed Black on White,	TD5033
"IMO 1" - Font size: 2", Printed Black on white	TD5034
"IMO 2" - Font size: 2", Printed Black on white	TD5035

OTHER PRODUCTS





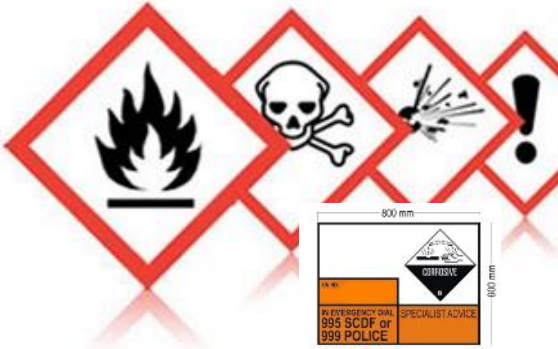
Tank Decals

Standard Tank Shipping Labels

Description	Part No.
"No Footwear" Sign - Dia.6" (153mm)	TD5010
"No Footwear" Sign - Dia.12" (300mm)	TD5011
"No Forklift" Sign - Dia 6" (153mm)	TD5012
"No Forklift" Sign - Dia 12" (300mm)	TD5013
Hazchem Label, size: 600mm x 800mm (With Data), Printed Black, Orange on White	TD5037
Hazchem Label, size: 600mm x 800mm (Without Data), Printed Black, Orange on White	TD5038
"SUPER HEAVY" (Triangle) - 10" x 10", Printed Black On Yellow	TD5040

OTHER PRODUCTS





PV Valve Test Kits / Periodical Test Rigs

PV Valve Test Kit

Description	Part No.
PV Valve Test Kit c/w 2 pcs of PV Valve Mounting Adaptor	TK001
PV valve Hydraulic Calibration Jack - SS	TK002
PV Valve Support Plate	TK003
PV Valve Vacuum Plate Opener (Small Diameter) - SS	TK004
PV Valve Vacuum Plate Opener (Big Diameter) - SS	TK005
PV Valve Vacuum Opener: Slot Pin - SS	TK006
PV Valve Pressed Cap Opener: 3 Pins - SS (Perolo Old Version)	TK007
PV Valve Pressed Cap Opener: Hexagon Type - SS for "Twinact"	TK008
PV Valve Pressed Cap Opener: 2 Pins Type for "Maxi High Flow" Model - SS	TK009
PV Valve Press Cap Opener: 2 Pins (Big) for Perolo PV Valve	TK010
C-Spanner for Pressure Vacuum Relief Valve	TK011
PV Valve Mounting Flange for Flanged Type PV Valve Testing	TK012
Tank Periodical Test Kit c/w 1½" BSP thread (for Tank Test)	TK013
Tank Periodical Test Kit c/w 2" BSP Thread (for Tank Test)	TK014
Tank Periodical Test Kit c/w ¾" BSP Thread (for Steam Tube Test)	TK015
Tank Periodical Test Kit c/w 1" BSP thread (for Steam Tube Test)	TK016

OTHER PRODUCTS



PV Valve Hydraulic Jack

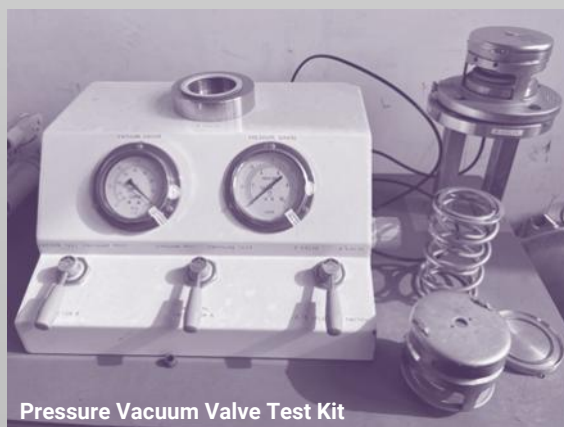


Tank Airline Test Rig

Pressure / Vacuum Test Rig - is used for the testing of any pressure or vacuum relief valve. Connection is by a 2½" BSP socket mounted on top of the rig with adaptors available upon request. The rig comprises of a digital pressure and vacuum gauge and two control valves.

The testing range of the rig is -10 to 100 PSI (-0.7 to 6.9 Bar).

Supply connection to the test rig is via a ¼" BSP female socket on the back of the rig.



Pressure Vacuum Valve Test Kit



MANLID SEALS

VALVE SEALS

O RINGS

VALVE GASKETS

FLANGES & CONNECTIONS

DUST CAPS

DOCUMENT HOLDERS / FLAME TRAPS / DIP STICKS

THERMOMETERS

PRESSURE GAUGES

METAL VALVE REPLACEMENT PARTS / ACCESSORIES

RIVETS / WALKWAYS / REMOTE CONTROLS

TIR SECURITY SEALS / DATA PLATES

BURSTING / RUPTURE DISCS

CLADDINGS / INSULATIONS

IMDG LABELS / TANK DECALS

PV VALVE TEST KITS / PERIODIC TEST RIGS

CAMLOCK COUPLINGS



NCI GLOBAL PTE. LTD.

10G Enterprise Road
Enterprise 10
Singapore 629833
Tel: +65 6517 9848
E-mail:
charlene.goh@nci.com.sg
stella.chow@nci.com.sg
sales@nci.com.sg
UEN: 202335130H



**CHANGING THE WORLD
WITH TECHNOLOGY**

NCI.COM.SG